

Overview

WeedMD Inc. (TSXV:WMD) is a publicly traded Licensed Producer under the ACMPR, licensed to cultivate and sell dried flower, produce and sell cannabis extracts, and sell live plants.

WeedMD is focused on maximizing shareholder value through disciplined and diligent execution. Led by persistent commitment to our people, through internal talent development and emphasis on culture; innovation, by creating unique products and new consumer experiences and occasions; quality, by producing consistent, reliable, high-quality products; and a strict capital allocation policy.

Management Team

Michael Kraft, *Chairman & Director*

25+ years experience in sales and marketing, business and corporate development, strategic planning and finance. Founder of Buckingham Group Ltd, a privately-owned merchant bank.

Keith Merker, *CEO & Director*

Formerly CFO of WeedMD. 15 years as a Finance Professional, holds the Chartered Financial Analyst designation. Extensive experience working with emerging growth public and private companies in corporate finance, accounting and operations.

Dr. Domenico Fuoco, *Chief Innovation Officer*

20 years of analytical chemistry and product development experience and an award-winning published scientific author. Founder and President of Smart Medicines GMP Inc.

Nichola Thompson, *Interim CFO*

More than 15 years in senior finance roles; previously held management positions at Discovery Air, Deloitte & Touche, and Siemens. She obtained her Chartered Professional Accountant & Chartered Accountant designations in 2007.

Josephine DesLauriers, *SVP, People*

Over 15 years of experience in a variety of HR-related functions. Widely recognized in the industry for her work in seniors' housing. Previously with Centric Health.

Brett Moon, *SVP, Sales & Marketing*

Over 10 years in sales and marketing within various controlled substance categories. Known for building out fortune 500 brands.

Investment Highlights



SIGNIFICANT FUNDED CAPACITY – Fully-funded for 600,000 sq.ft. of indoor and greenhouse production plus upwards of 2.2mm sq.ft. available from outdoor production¹ at WeedMD's 98-acre property in Strathroy



QUALITY CULTIVATION – 70,000 sq.ft of current capacity with an estimated 136,000 sq.ft. by fall 2018 and 554,000 sq.ft. by year-end 2018, positioning WeedMD for leadership in the adult-use market



TOP-NOTCH GENETICS – Unique and industry-leading genetic bank with hundreds of strains. WeedMD is seeding the industry, having sold genetics to >20% of LPs



MULTIPLE DISTRIBUTION CHANNELS – Shoppers Drug Mart supply agreement¹, Alberta Gaming, Liquor & Cannabis Commission, British Columbia Liquor Distribution Branch, Nova Scotia Liquor Corporation, Ontario Cannabis Retail Corporation and other TBA adult-use supply channels, preferred supplier agreements with seniors and long-term care providers, and robust direct-to-patient program



EXPERIENCED MANAGEMENT – Proven executive team with experience in cannabis, consumer packaged goods, senior care, natural health products, and capital markets

Milestones and Catalysts

WMD has consistently and successfully delivered on its corporate milestones, and has multiple value-generating licensing and business opportunities in its pipeline.

Fall 2018:

- Aylmer (indoor) facility development
- Complete retrofit of Strathroy Phase 1, 5-acre state-of-the-art greenhouse
- Unveil adult-use brands
- Deliver additional long-term care contracts

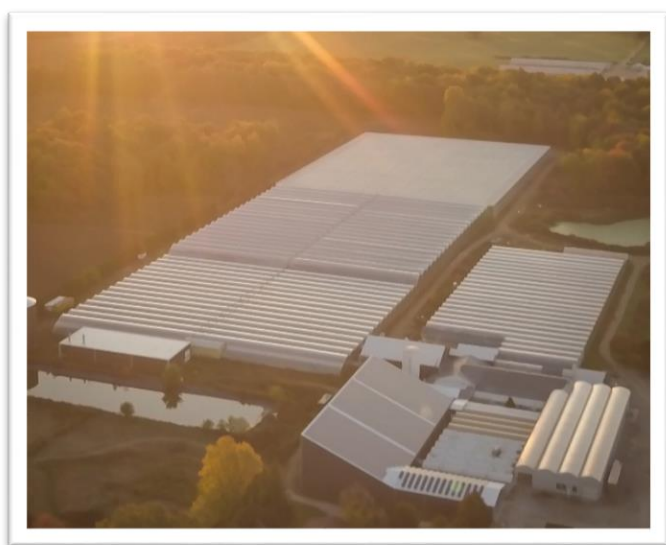


Extensive Production Platform

Licensed status	Aylmer <i>Ontario</i>		Strathroy <i>Ontario</i>		TOTAL
	Cultivate and sell flower; produce and sell oil	Cultivate flower	Outdoor	Outdoor*	
Facility type	Indoor	Greenhouse (hybrid, traditional)		Outdoor*	
Lot size	4 acres 174,000 sq. ft.		98 acres 4.3mm sq. ft.		4.4mm sq. ft.
Development completed	26,000 sq. ft.	44,000 sq. ft.	--		70,000 sq. ft.
Development - fall 2018	--	110,000 sq. ft.	--		136,000 sq. ft.
Development - Q1 2019	--	528,000 sq. ft.	--		554,000 sq. ft.
Development - potential	100,000 sq. ft.	616,000 sq. ft.	2.2mm sq. ft./50 acres		2.9mm sq. ft.

Robust Financial Position and Clean Capital Structure

Cash	\$mm	\$ 37.7	Common Shares Outstanding	mm	107.8
Non-Convertible Debt	\$mm	\$ 0.0	Options Outstanding	mm	9.6
Net Cash	\$mm	\$ 37.7	Warrants Outstanding	mm	11.3
Potential Options and Warrants Proceeds	\$mm	\$ 44.5	Convertible Debt	mm	2.3
Convertible Debt	\$mm	\$ 2.8	Fully Diluted Shares Outstanding	mm	131.0



Chairman
Michael Kraft
mike@weedmd.com
416-617-7455

Chief Executive Officer
Keith Merker
keith@weedmd.com
519-706-4900

2. Source: Company reports, analyst estimates, Thomson Eikon (priced as of July 9, 2018 close). Capital structures updated for post-quarter events.

The statements made herein are for informational purposes only and are not an offer to sell securities or a solicitation of offers to purchase securities and should not be construed to be investment advice. This document contains forward-looking statements. Forward looking statements may be identified through the use of words such as "expects," "will," "anticipates," "estimates," "believes," or by statements indicating certain actions "may," "could," or "might" occur. Forward looking statements are based on expectations, estimates and bona fide management belief at the time the statements.